

Add-On-Profile: Installation Instructions

METTLER TOLEDO

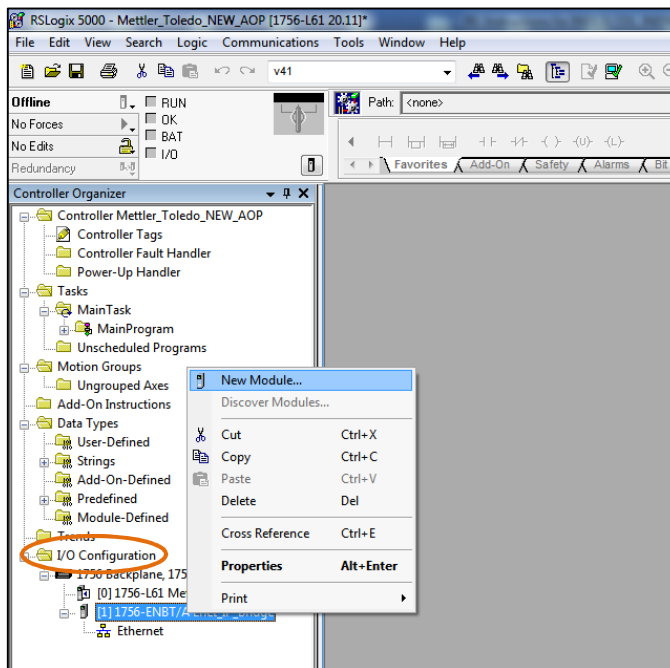
- RSLogix5000 version 15 or later

Installation requirements • This profile is intended for use with the IND131/IND331, IND560, IND570, and IND780 scale terminals.

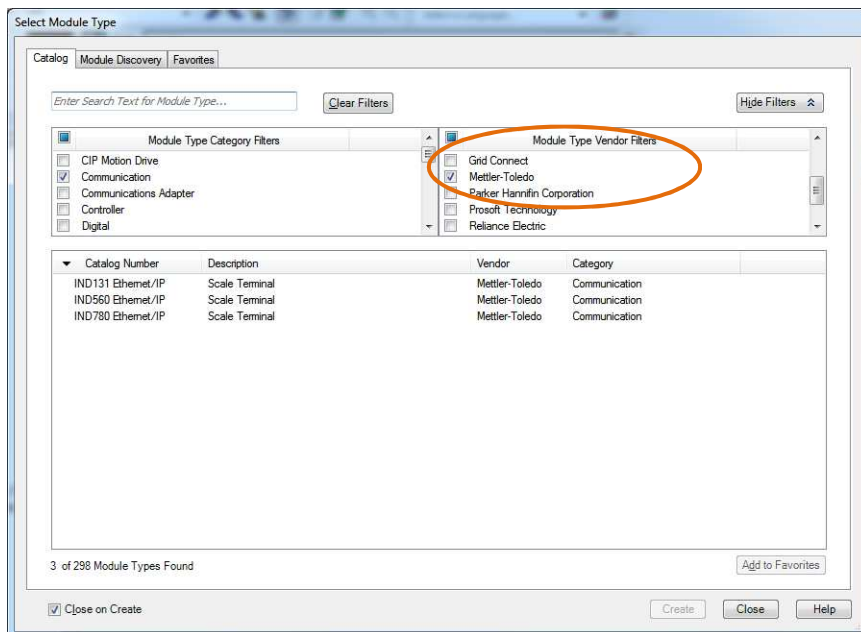
1 Copy the AOP .zip file to a newly-created folder and extract its contents there.

2 Double-click the MPSETUP.EXE file and follow the prompts on the installation screens. The AOP files will be added to the RSLogix5000 program.

3 When adding a new ControlNet (IND780 only) or Ethernet/IP (IND131/IND331, IND560, IND570, and IND780) module in RSLogix5000, the profile will appear in the I/O configuration.

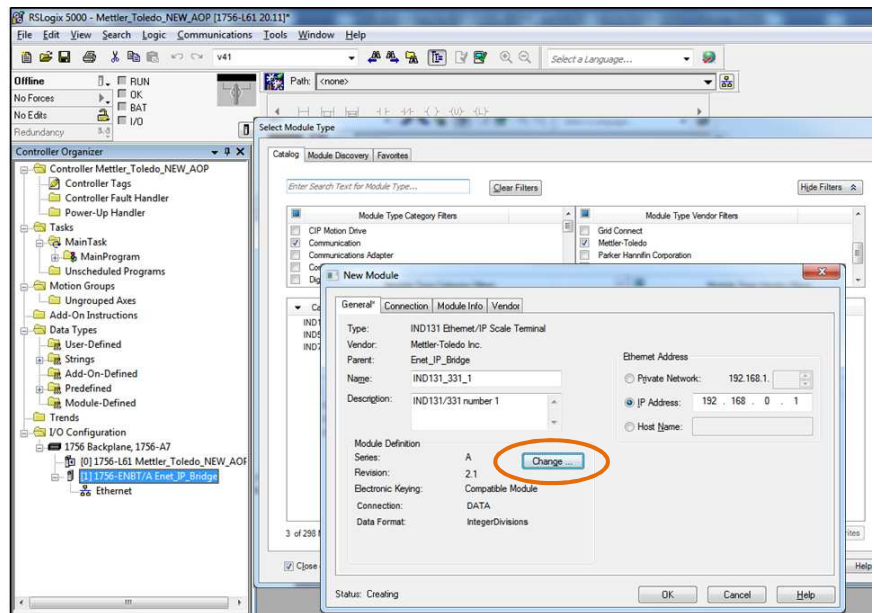


4 Select the required METTLER TOLEDO module from the list of modules shown in the Module Type Vendor filter.



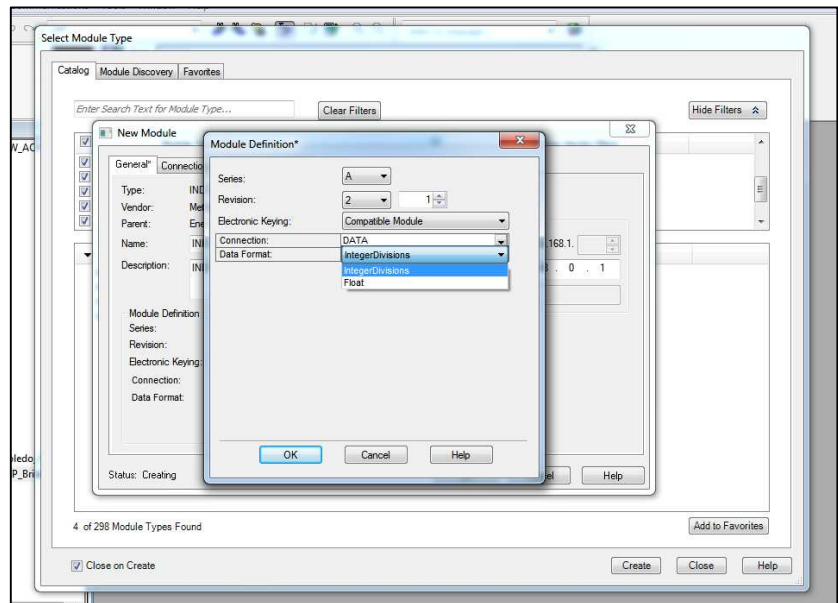
5

Once the module is selected, the new module data definitions are displayed. Enter an appropriate name, description and network address for the module.



6

If necessary, click on the **Change** button to edit the **Revision** and **Data Format** and, for IND560, IND570, and IND780, to change the **Number of Slots** used by the module.



7

Accept the changes and click OK to complete the module definitions. The **Input** and **Output Data Tags** will be created.

8

Refer to the Help files found on the Vendor tab for further details on configuration and I/O definitions.

9

Starting with RSLogix5000 version 18, there is an option to set up input connections as either unicast or multicast. Check the box indicated at right to select unicast. If the box is not checked, the input connection will be set up for multicast.

